

SPEC GRADE SERIES SLOPED-TOP DISCONNECTS

STAINLESS STEEL; 30A – 100A



NEW EXTERNAL MOUNTING FEET

MENNEKES® SPEC Grade Sloped Roof Disconnects are newly expanded to include two mounting options. You can mount flush to the wall with sealed internal fixing holes. Or, now you can install using external mounting feet with a nearly 1" standoff, allowing for runoff and inspection behind the installation.

Disconnects are available 30A, 40A, 60A & 100A in three enclosure sizes. All units feature a 15° sloped roof for the ultimate clean installation. Robust, high visibility operator handle



complies with LO/TO regulations. Drainage channel design helps to impede harborage of contaminants.

Switches meet code requirements for "suitable as a motor disconnect" and come standard with early break auxiliary contacts for VFD and starter interface.

SPEC Grade Disconnects are especially suited for clean room, critical washdown and heavy traffic areas in food, beverage, paper, pulp and pharmaceutical plants. They are part of a full line of stainless steel and non-metallic motor disconnect and enclosure products.

SPEC Grade Series Sloped-Top Disconnects

Now available with External Mounting Feet

Catalog No. with External Mounting Feet	Catalog No. with Internal Mounting Holes	Amps	HP Ratings			
			240VAC 1Ø	240VAC 3Ø	480VAC 3Ø	600VAC 3Ø
ME30SLP-M2-MF	N/A	30	5	10	20	25
ME30SLP2A-M2-MF	ME30SLP2A-M2	30	5	10	20	25
ME40SLP2A-M2-MF	ME40SLP2A-M2	40	5	15	25	30
ME60SLP2A-M2-MF	ME60SLP2A-M2	60	7.5	15	30	40
ME100SLP3A-M2-MF	ME100SLP3A-M2	100	15	25	50	50



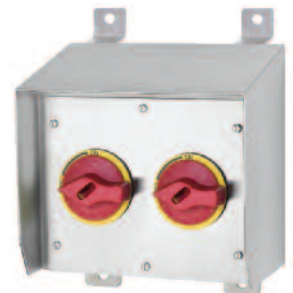
SLP3A-MF

Compliances and Performance

- “Suitable as Motor Disconnect” per 2002 NEC Article 430-109(a)(6)
- Standard 508
- to CSA 22.2 No. 14-M95
- Environmental: UL Type 4X; 12; IP69K
- UV Resistance: Handle Material is UV Stabilized
- In-House Endurance Testing: 10,000 Electrical Cycles/100,000 Mechanical Cycles
- SCCR - 65kA RMS Symmetrical when protected with Class J Fuse



SLP2A-MF

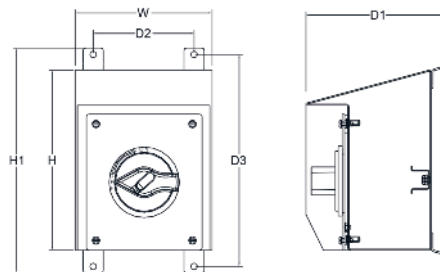


Mounting Feet also available on the SpecMAXX Power Distribution Series

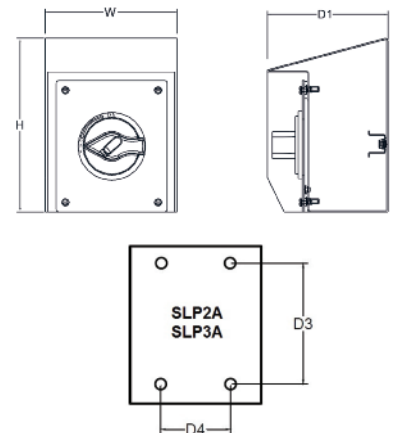
Features and Benefits

- 15° Sloped Roof to Facilitate Run-Off of Liquids
- Generous Drainage Channel to impede Harborage of Contaminants
- Shrouded to minimize damage to handle
- Units Available with Attached Mounting Feet or Internal Sealed Fixing Holes
- Removable Cover with Captive Hardware
- Ground Stud Provided

External Mounting Feet



Internal Mounting Holes



MENNEKES

Electrical Products

277 Fairfield Road
Fairfield, NJ 07004

Phone: (800) 882-7584

Fax: (973) 882-5585

Email: info@MENNEKES.com

Website: www.MENNEKES.com

	SLP-MF	SLP2A-MF	SLP3A-MF
H	7.5"	8.9"	11.7"
H1	9.7"	11.1"	13.9"
W	5.5"	6.8"	7.6"
D1	5.5"	7.1"	7.1"
D2	4.1"	5"	5.8"
D3	8.55"	10.5"	13.2"

	SLP	SLP2A	SLP3A
H	7.5"	8.9"	11.7"
W	5.5"	6.8"	7.6"
D1	4.6"	6.2"	6.2"
D3	—	4.6"	7.4"
D4	—	3.6"	4.4"