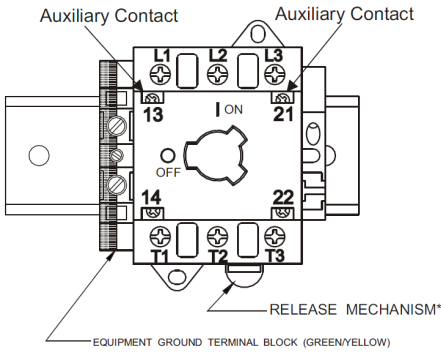
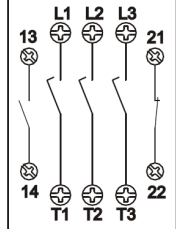


DS/CDS Disconnect Switches Wiring and Mounting Instructions

WIRING DIAGRAM



CONTACT ARRANGEMENT



AUXILIARY CONTACTS
Rating: 10A 600Vac
Wiring: 13-14 N/O
21-22 N/C

*If needed – pull down with screwdriver in slot.
Tilt upward on load side of switch to release.

TERMINAL SPECIFICATIONS

	25 & 30Amp	Torque	40Amp	Torque
Switch	#12 - 10 AWG	11 lbs./in.	#8 AWG	13-16 lbs./in.
Ground	#12-10 AWG	20 lbs./in.	#10-8 AWG	20 lbs./in.
Auxiliary	#14 AWG	4 lbs./in.	#12 AWG	7 lbs./in.

HP RATINGS

Catalog Number		HP Ratings			
		1 Ø 240VAC	3 Ø 240VAC	3Ø 480VAC	3 Ø 600VAC
ME 30CDS1A-M2	30A	5	10	20	25
ME 20DS1A-M2	25A	3	7.5	15	20
ME 30DS1A-M2	30A	5	10	20	25
ME 40DS1A-M2	40A	5	15	25	30

Conduit Connection and Grounding Instructions - For Enclosures Not Prepared with Conduit Entry Holes

- NOTES:**
- Use of a UL Listed liquid-tight hub or connector fitting is required to maintain NEMA 4X, 12 or IP69K Rating.
 - Use of a UL Listed hub or grounding bushing system is required for metallic grounding applications ¾" max.
 - Grounding bushings are not required with non-metallic conduit.

- Conduit Holes** – cut holes in enclosure at drill point locations only. Drill points are provided as a guide. See Fig. 6 for DS and Fig. 7 for CDS details. Use of a standard hole saw is the preferred method.
- Conduit Connections**
 - Metallic** – secure the conduit hub onto the conduit. Then secure the conduit hub into a prepared enclosure hole using the hub nut and/or grounding bushing inside the enclosure. Use the wiring diagram illustrated on the Wiring Instructions. Phase conductors and separate equipment grounding conductor (if present) should be sized in accordance with N.E.C. FOLLOW GROUNDING INSTRUCTIONS BELOW
 - Non-Metallic Conduit** – secure conduit to the conduit connector (hub) either before or after the conduit connector is secured into an enclosure hole using the connector locknut. Use the wiring diagram illustrated on the Wiring Instructions. Size phase conductors and separate equipment ground to N.E.C. FOLLOW GROUNDING INSTRUCTIONS BELOW

Grounding Instructions

IF A METALLIC CONDUIT SYSTEM IS USED TO PROVIDE THE EQUIPMENT GROUND:

Metal conduit fittings with a ground screw on lock nut/bushing must be utilized (not provided). Attach a properly sized ground wire (not provided) to each ground nut/bushing screw. Secure the opposite ends of the wire to a terminal on the green/yellow ground block (provided on metal din rail). NOTE: Only one wire per terminal of ground block. The "jumper" wires and ground block complete the grounding path.

IF A SEPARATE EQUIPMENT GROUNDING CONDUCTOR IN THE CONDUIT IS USED:

Connect the grounding conductor to the green/yellow ground block mounted on the metal din rail. NOTE: Only one wire per terminal of ground block.

SHORT CIRCUIT PROTECTION ACCORDING TO UL

These units are suitable for use on circuits capable of delivering not more than 65,000 RMS Symmetrical Amperes at 600Vac Maximum.

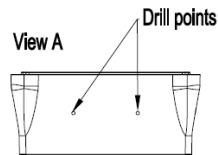
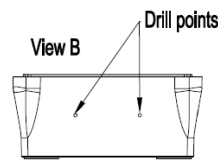


Fig. 6

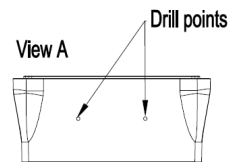
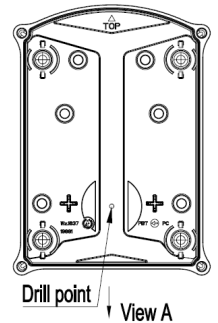
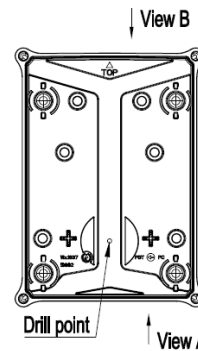


Fig. 7

DS/CDS Disconnect Switches Wiring and Mounting Instructions

NOTICE:

1. Turn off power feed to switch before installing or servicing.
2. This unit provides no overcurrent protection.
3. Select conductors in accordance with the 75°C column of Ampacity Table 310.15(B)(16) of the National Electrical Code.

To Remove and Replace Front Cover

Fully loosen screws (Do Not Remove) located in four corners of cover. See Fig. 5
Pull cover away from bottom of enclosure. To replace cover, reverse above procedure.
A slight rotation of the switch handle may be needed to align the cover. Do not force.
Do not over-torque. Tighten cover screws and mounting feet to 13 in.lb.

Internal Mounting Method for DS/CDS Box

1. Position Box upright using ON/OFF as Reference.
2. With cover off, remove the (4) water seal caps by turning counterclockwise, a quarter turn. (See Fig 1a)
For DS Box: See Fig. 1 for water seal cap locations and mounting details. For CDS Box: See Fig. 2 for water seal cap locations and mounting details.
3. Mark mounting hole locations (Figs. 1) on mounting surface and prepare as required for hardware to be used.
4. Mount Unit on Secure Flat Vertical Surface using flathead hardware (not provided) up to 1/4" max. (See Fig 1b)
5. Reinstall Sealing Caps by rotating clockwise, a quarter turn to maintain Type 4X, IP69K rating. (See Fig. 1c)
6. Reinstall Cover and Tighten 4 Cover Screws to 13in.lb max. See Fig. 5

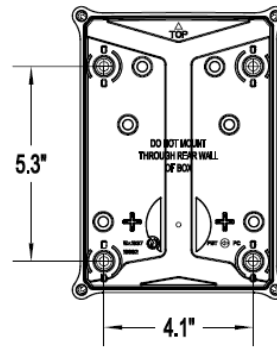


Fig. 1

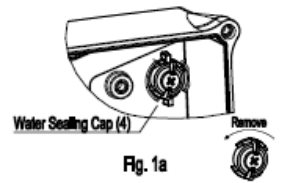


Fig. 1a

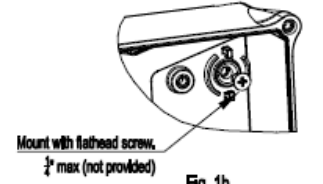


Fig. 1b

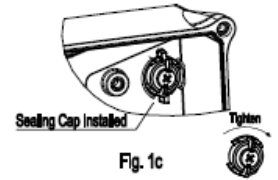


Fig. 1c

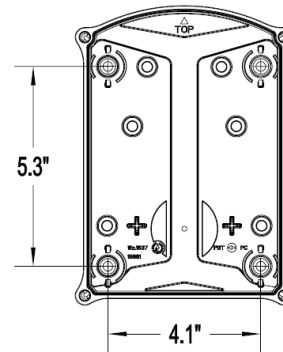


Fig. 2

External Mounting with Mounting Feet for DS/CDS Box

1. Position Box upright using ON/OFF as Reference.
2. With cover off, remove the (4) water seal caps by turning a quarter turn, counterclockwise. See Fig. 3a.
For DS Box: See Fig. 3 for water seal cap locations and where mounting feet are attached.
For CDS Box: See Fig. 4 for water seal cap locations and where mounting feet are attached.
3. Position external mounting feet as desired in 1 of 3 positions. See Fig 3 for DS Box; Fig 4 for CDS Box. Secure mounting feet to enclosure with provided screws. Tighten to 13 in. lb max. See Fig. 3b.
4. Reinstall Sealing Caps by turning a quarter turn clockwise to maintain Type 4X, IP69K rating. (See Fig. 3c)
5. Mounting Feet accept up to 1/4" hardware (not provided). Mark mounting pattern to selected mounting foot pattern. See Figs. 3 or 4. Prepare surface as required for hardware and mount to Flat Vertical Surface.
6. Reinstall Cover and Tighten 4 Cover Screws to 13 in.lb max. See Fig. 5

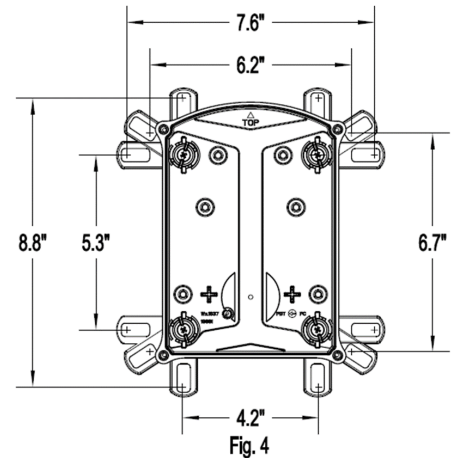


Fig. 4

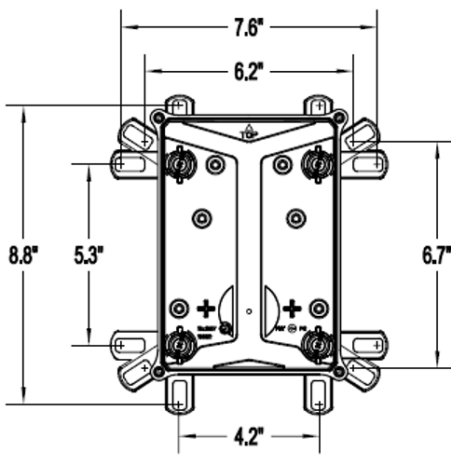


Fig. 3

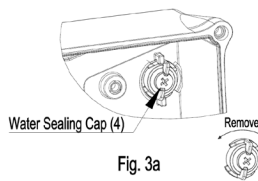


Fig. 3a

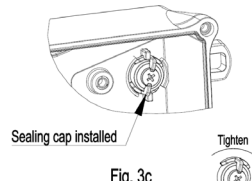


Fig. 3c

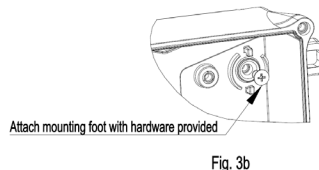
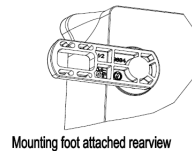


Fig. 3b



Mounting foot attached rearview

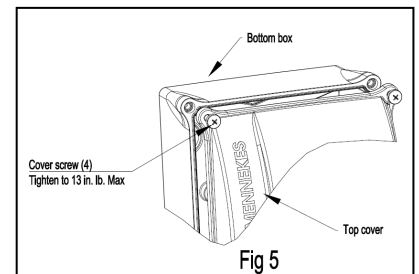


Fig. 5